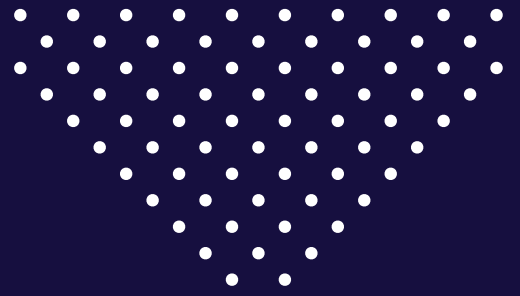


EXTRAORDINARY  
**ESSEX**



# ENERGY

## ➤ VALUE PROPOSITION

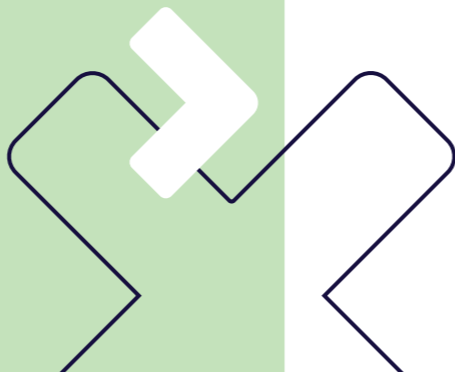


# CONTENTS

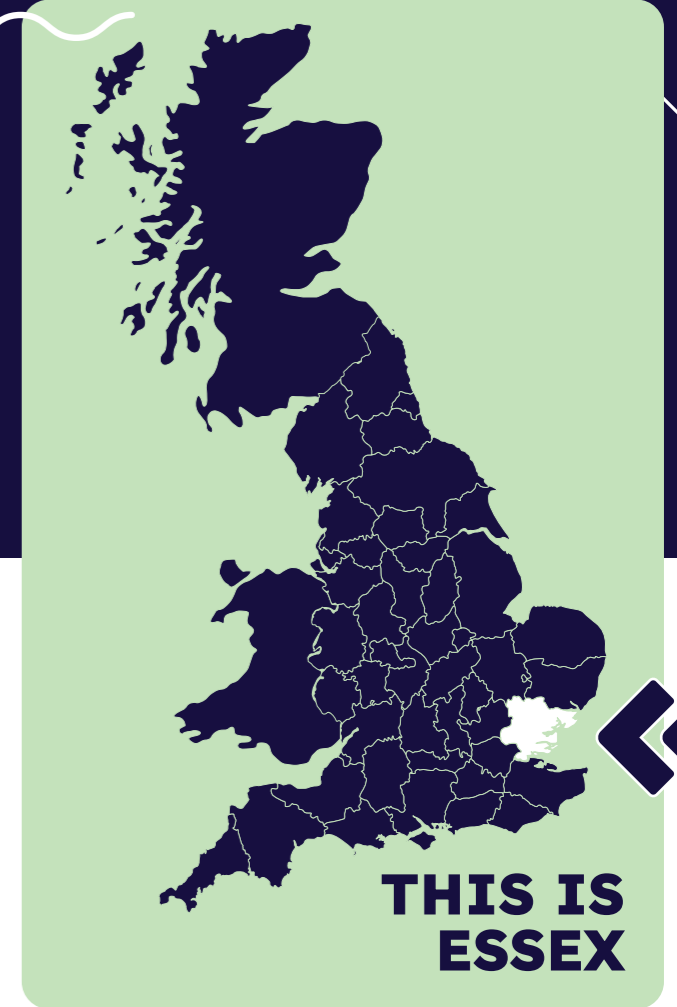
- Welcome to Essex: A connected, confident, and fast-growing economy on the UK's east coast 3
- Essex's energy sector at a glance 6
- Home to the remarkable 8
- Essex's energy revolution 10
- One sector, unlimited opportunities 12
- Case studies 15
- Support from day one 17
- Life in Essex 18



## ESSEX: OPEN FOR INVESTMENT. READY FOR THE EXTRAORDINARY.



# WELCOME TO ESSEX: A CONNECTED, CONFIDENT, AND FAST-GROWING ECONOMY ON THE UK'S EAST COAST



Situated where the Thames Estuary meets the North Sea, Greater Essex has long been one of the UK's most important gateways for trade, innovation and talent.

Its coastal position has shaped both its economy and its identity, creating a region that looks outward, connects globally and consistently leads on the industries of the future. Today, this legacy is powering a new chapter: Greater Essex is emerging as one of the UK's most significant centres for energy production, technology and supply-chain growth.

Home to 1.93 million residents, including 1.17 million people of working age, Greater Essex is one of the largest and most economically dynamic areas in the country.



A £54.8 billion economy underpinned by more than 94,000 businesses provides a deep commercial base, and its workforce is characterised by high levels of economic activity, technical capability and sector-specific expertise - the essential ingredients of a successful energy transition.

This strength is reflected in the exceptional concentration of world-leading sustainable energy and infrastructure organisations already operating here. Companies such as EDF, RWE, Ørsted, Chinook, Low Carbon, Aura Power, Firefly Green Fuels, Indaver, Sumitomo Corporation, Gülermak and Harwich International Port / Freeport East anchor an ecosystem that spans offshore wind, solar generation, energy storage, clean fuels, advanced engineering and port-based innovation.

ESSEX'S NATIONALLY SIGNIFICANT FIRMS' ACTIVITY IS NOT ASPIRATIONAL BUT OPERATIONAL, DELIVERING NATIONAL-SCALE PROJECTS AND FORMING ONE OF THE UK'S **MOST ROBUST AND FUTURE-READY** CLEAN-POWER CLUSTERS.

The geography of Greater Essex supports this momentum. The county's varied places - from historic centres like Chelmsford and Colchester to high-growth towns such as Basildon and Harlow, and internationally connected coastal hubs including Southend and Harwich - are bound together by exceptional infrastructure. Fast links to London, international ports and airports, and gigabit-capable broadband reaching over 88% of premises give the region an accessibility advantage few parts of the UK can match.

For the energy sector, this means rapid movement of components, people, knowledge and capital.



### GREATER ESSEX NOW SITS AT THE HEART OF THE UK'S NATIONAL CLEAN POWER 2030 MISSION.

The region is positioning itself not simply as a cluster of projects, but as a fully integrated production, innovation and supply-chain hub for energy. Long-term investment in advanced port infrastructure, engineering capabilities, new communities and regeneration schemes is opening new employment land, strengthening supply chains and supporting the industries that will define the next generation of economic growth.

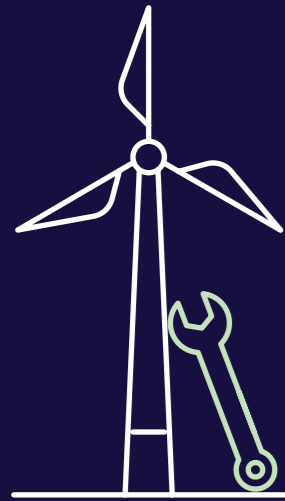
What emerges is a region built on enterprise, shaped by connectivity and powered by one of the most resilient and opportunity-rich economies in the UK. Greater Essex is not only open for energy investment, it is already delivering at scale, and ready to play a defining role in the UK's low-carbon future.



**ESSEX IS OPEN FOR INVESTMENT, EQUIPPED TO DELIVER, AND READY FOR THE EXTRAORDINARY.**



# ESSEX'S ENERGY SECTOR AT A GLANCE



**5,900**  
SUSTAINABLE ENERGY WORKERS  
(6,545 ACROSS GREATER ESSEX)

A highly skilled workforce generating **£1.19 billion** in GVA and contributing **2.2%** of the entire Greater Essex economy.

**~85** ENERGY ENTERPRISES AND  
**210** ENERGY LOCAL UNITS

One of the strongest energy business bases in the East of England, larger than Kent, Cambridgeshire or Suffolk.



**1,038MW**  
OF OPERATIONAL RENEWABLE GENERATION

A significant installed base across offshore wind, onshore wind and solar — providing the platform for rapid future expansion.



SECTOR PAY:  
**£38K-£50K ENTRY | £42K-£55K MID-CAREER | £80K-£120K SENIOR\***

Competitive salaries reinforcing the attractiveness and maturity of the renewable energy labour market.

\* Average figures based on 2026 local job salaries

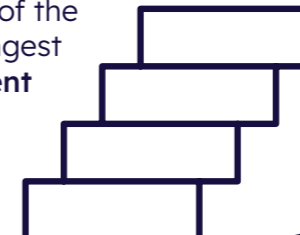


**363,000**  
RESIDENTS QUALIFIED TO RQF LEVEL 4+

A deep reservoir of technical and professional skills supporting energy, advanced manufacturing and innovation industries.

**17,710**  
APPRENTICESHIP STARTS ACROSS ESSEX

Nearly one-quarter of all East of England apprenticeships, creating one of the region's strongest technical talent pipelines.



**88%** GIGABIT BROADBAND COVERAGE ACROSS ESSEX

A digitally connected region supporting data-intensive energy technologies and smart-infrastructure solutions.



**81.1% ECONOMIC ACTIVITY AND 77.9% EMPLOYMENT RATE**

A highly active labour market, well-suited to scaling clean-energy operations and supply chains.



**UNRIVALLED CONNECTIVITY**



➤ **TWO MAJOR PORTS** (HARWICH, TILBURY) WITH FREEPORT BENEFITS



➤ **TWO INTERNATIONAL AIRPORTS** (STANSTED AND SOUTHEND)

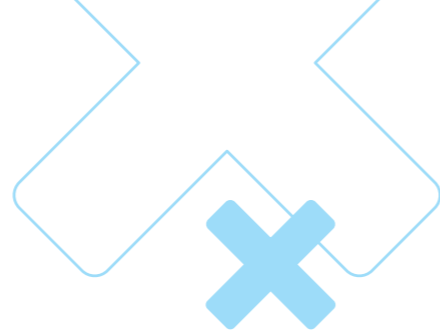
Provide **fast, easier access** to European and global markets.



➤ **STRATEGIC ROAD/RAIL LINKS** (A12, A13, A120, M11, FAST LONDON RAIL)

Ensures **seamless access** to national supply chains and customers.

# HOME TO THE REMARKABLE



Essex's geographic position is not accidental: it is the foundation of the region's energy leadership.

The region sits at the intersection of three critical systems:

- **The Southern North Sea** - Europe's richest offshore wind resource
- **The Thames Estuary** - the UK's busiest maritime corridor
- **The national electricity grid** - the Norwich to Tilbury transmission spine

## ➤ Natural potential

Essex has direct access to world-class wind resources in shallow to intermediate waters. Current operational renewable energy capacity includes Longfield Solar (up to 500 MW, solar PV + Battery Energy Storage Systems (BESS); Development Consent Order (DCO) granted 26 June 2023), Gunfleet Sands (172 MW offshore), and Galloper (353 MW offshore). Five Estuaries (1,080 MW, 79 turbines) is approved for construction beginning mid-2026. Six additional projects are in planning or consented phases, including North Falls (100 MW), Seahorse (1,200 MW), and others.

These create a pipeline of 4,000 plus MW of additional offshore capacity through 2035.



This demonstrates scale. Essex will control seven to 10% of the UK's 2030 offshore wind deployment opportunity (2030 target: 43-50 GW). In addition, the pipeline extends to floating offshore wind with deeper water, higher wind resource, and an emerging supply chain, positioning Essex for continued growth through 2040.

## ➤ Infrastructure advantage

Freeport East, headquartered at Harwich, operates 1.4 kilometres of deep-water quays specifically designed for offshore wind supply chain operations. The port can handle offshore wind installation vessels, floating platform assembly, and heavy project cargo with draught sufficient for world-class offshore vessels. This is not aspirational, Hutchison Ports Harwich is already operationalising this capability.

Bathside Bay in Harwich represents an opportunity to transform the area into a green energy hub. As one of the largest land reclamation projects in the country, it will unlock over 120 hectares of high-quality employment land adjacent to the international port, creating the foundations for a nationally important site. The Freeport East zone covering Harwich and surrounding areas encompasses ~5,000 hectares eligible for Freeport incentives.

The region is further strengthened by the Norwich to Tilbury 400 kV transmission upgrade, the core of the UK's Great Grid Upgrade, connecting North Essex to national clean-energy demand centres and enabling large-scale offshore wind, solar, and hydrogen deployment across the Thames Estuary.



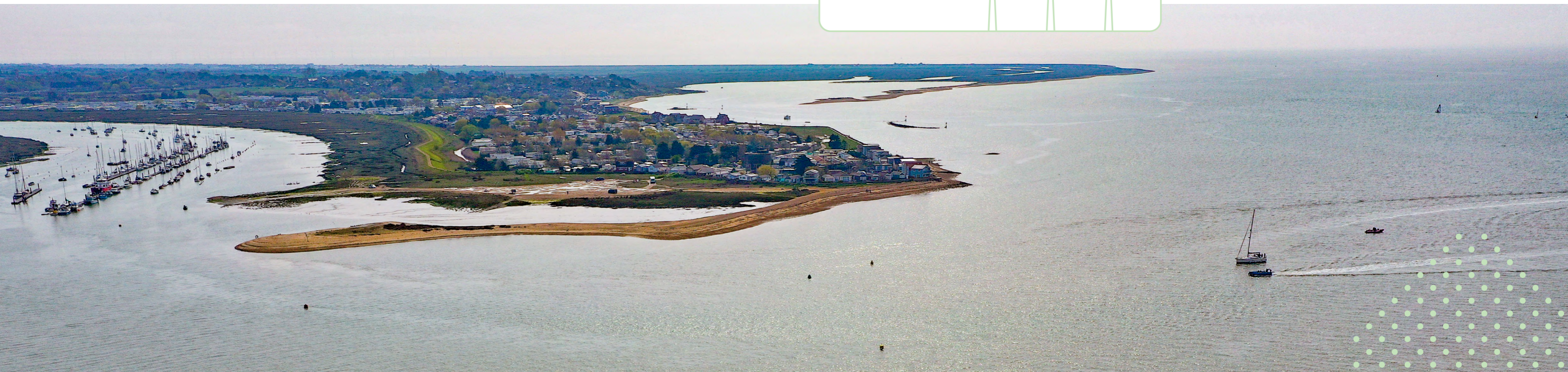
## ➤ Market upside

Essex sits at the heart of one of the most important energy markets in the world. Its proximity to London, the UK's capital and global financial centre, creates both immediate demand and unparalleled access to energy capital.

London's sustainable energy economy generates £6.46 billion in GVA, and Essex's 1,038 MW of operational renewable capacity, together with the 1,080 MW Five Estuaries project now approved, directly underpins London's clean energy transition.

➤ This relationship positions Essex not only as a generator of sustainable power, but as a strategic supplier to one of the world's most influential energy markets.

The numbers behind the sector reinforce this strategic importance. Greater Essex's sustainable energy industry already employs 5,900 people (6,545 across Greater Essex) and generates £1.19 billion in GVA, contributing 2.2% of the county's total economic output. The county is also home to 365 sustainable energy enterprises, reflecting a diverse and expanding ecosystem of installers, engineers, manufacturers, and supply-chain innovators.



# ESSEX'S ENERGY REVOLUTION

Essex's energy ecosystem is established around four distinctive clusters, each contributing to a vital part of the county's low-carbon strengths. Together, they connect world-class ports, advanced manufacturing, university-led innovation and strategic grid infrastructure into a cohesive system. This integrated platform gives Essex the scale, capability and momentum to drive clean-power growth at a pace few regions can match.

## Basildon to Southend: Essex's industrial heartlands

▶ The Basildon to Southend corridor is the industrial centre of Essex's clean-energy economy, with more than 1,500 workers across 45 specialist firms.

▶ It is the county's main hub for precision engineering, structural fabrication and advanced manufacturing, supported by long-standing experience in major infrastructure projects.


Its location near Tilbury Port and the Thames Estuary, along with fast connections via the A127 and A13, allows manufacturers to move large components efficiently.

The corridor is already part of the Sizewell C supply chain, producing mechanical assemblies, steel structures and electrical housings, and is expanding into offshore wind foundations, subsea structures and power-electronics assembly. New activities are also emerging, including early battery manufacturing, energy-storage recycling and hydrogen storage and distribution technologies.

## Harwich and Tendring: Strategic centre for sustainable energy

▶ Harwich and the wider Tendring district is Essex's fastest-growing sustainable energy cluster, anchored by Freeport East and Hutchison Ports Harwich.

The area has 1.4 km of deep-water quays that can handle the largest offshore-wind vessels, floating-platform components and heavy project cargo, offering a rare mix of depth, lifting capacity and readiness. Bathside Bay is also set to become a green energy hub, developed as a major centre for clean manufacturing, hydrogen production and offshore-wind assembly, further strengthening the area's strategic role. This role is further underlined by two major Nationally Significant Infrastructure Projects (NSIPs) with landfall and grid connections in Tendring - RWE-led Five Estuaries Wind Farm, which secured development consent last year, and the RWE and SSE Renewables project North Falls Offshore Wind Farm, for which a determination is expected this summer.



Innovation is also growing through the Harwich Innovation Hub and partnerships with the University of Essex, supporting research in engineering, energy systems, hydrogen technologies and port-side automation.



## Rochford: Solar, storage and grid infrastructure hub

▶ Rochford is a delivery-ready sustainable energy cluster focused on solar power, energy storage and strong grid connections.

The area has over 130 MW of approved utility-scale solar, including Grasslands, Lark Hill and Rayleigh Solar Farm, all due for build and commissioning within the next two years. The Rayleigh Substation is a major grid node, with consented battery-storage cable links and a planned National Grid Pelham to Rayleigh upgrade in 2027-2028 that will increase renewable electricity flows across the region.

The Launchpad at Airport Business Park provides Building Research Establishment Environmental Assessment Method (BREEAM) Outstanding innovation space for engineering, cleantech and digital-energy businesses. The district also benefits from Wallasea Island's major nature-based climate infrastructure. Growth in public EV charge points, from 40 in 2024 to at least 76 by 2026, is enabling more local energy storage, vehicle-to-grid innovation and flexibility services. Together, Rochford's solar capacity, grid strength and innovation assets position it as a key hub in Essex's energy network.

## Colchester: Skills and research powerhouse

▶ Colchester is becoming a key centre for energy research, engineering consultancy and technical training, supported by around 900 employees and 40 growing businesses.

The University of Essex leads the cluster with strengths in engineering, energy-systems modelling, AI-driven optimisation and grid-integration research.

This is supported by Colchester Institute and Chelmsford College, which together provide clean-energy apprenticeships and technical training. Colchester Institute's newfound Clean Energy Technical Excellence College status, coming with a share of £175 million funding, will allow it to build on the success of its Net Zero and Renewables Centre to further focus on the sector, collaborating with Suffolk New College, East Coast College and City College Norwich.

Combined, this growing research, skills and industrial base positions Colchester as a fast-emerging hub for sustainable energy innovation, deployment and workforce development. The city offers investors and businesses a gateway to one of the UK's most active low-carbon markets.

# ONE SECTOR, UNLIMITED OPPORTUNITIES

## ➤ Grid strengthening energy infrastructure

The Tarchon Interconnector

Essex is set to capture significant energy opportunity through the Tarchon Interconnector – a 1.4 GW subsea and onshore electricity link connecting Essex directly to Germany’s energy market.

Landing in Harwich/Ardleigh, Tarchon will support the import and export of renewable power, improve grid stability, and enable the UK to better balance offshore wind generation. It represents one of the most strategically important energy projects in Europe, capable of powering up to 1.5 million homes. For Essex, the project brings major economic and employment benefits.

The construction of the converter station, the installation of 5km of HVAC cabling and 15 km of HVDC onshore cabling, and the UK section of the 600+ km subsea link will create multi-year demand for engineers, cable-installation teams, civil works specialists, groundworks contractors, and high-voltage technicians. The project’s long development and construction phases will also support local planning, environmental, logistics, and marine-services businesses.

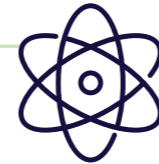
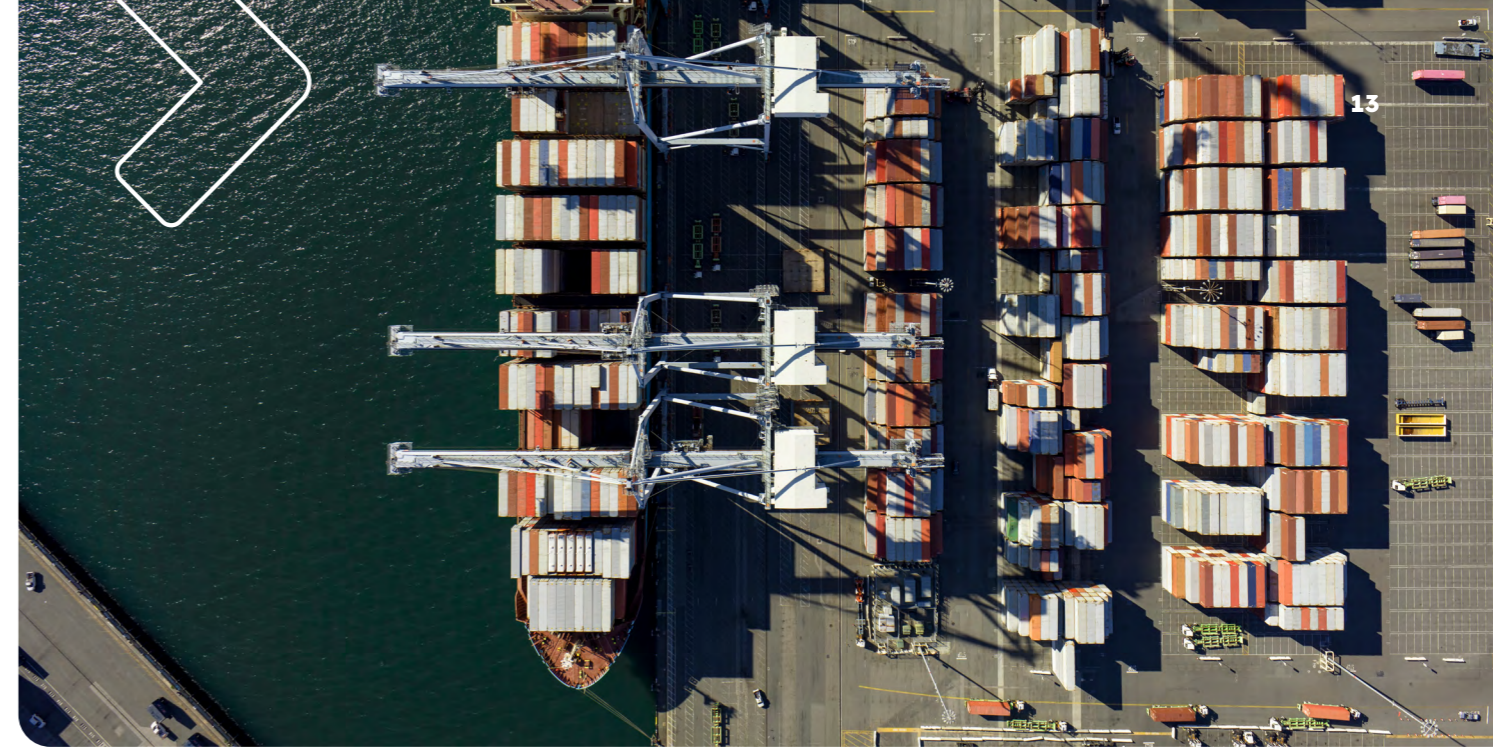
By anchoring a global-scale interconnector in the county, Tarchon reinforces Essex’s status as a critical energy gateway, strengthening the region’s attraction for further investment in offshore wind integration, HVDC skills, and advanced grid technologies. It showcases Essex’s role not just in generating and hosting energy assets, but in delivering the infrastructure that underpins Europe’s future low-carbon power system.

## ➤ Offshore wind and the next wave

Five Estuaries

Five Estuaries moves into construction from mid-2026, with RWE already mobilising suppliers and shaping one of the UK’s most forward-looking offshore wind programmes.

Essex is positioned at the centre of this: Harwich for assembly and port operations, Basildon for heavy manufacturing, and Tilbury/Southend for logistics and consolidation. The opportunity signals Essex’s leadership in delivering the next generation of offshore wind capability, backed by world-class developers and a maturing local supply chain.



## ➤ Nuclear infrastructure programme creating long-term opportunities

Sizewell C

With construction momentum now underway, Sizewell C will sustain 10,000 construction roles, 900 permanent jobs and £330 million in UK supply-chain contracts. Essex firms, particularly in Basildon, are positioned to capture major work in fabrication, mechanical components and logistics.

## ➤ Nuclear supply chain manufacturing

With the UK’s Small Modular Reactor (SMR) programme gaining momentum and a multi-decade delivery horizon, Essex’s manufacturing base offers a prime opportunity for specialised fabrication, modular assembly and advanced component production. Basildon provides the precision engineering depth required for reactor modules, while North Essex benefits from proximity to the Bradwell site. Together, they create a significant opportunity for long-term nuclear supply chain investment and workforce development.



REGIONAL COLLEGES WILL DELIVER **400 TO 500 APPRENTICESHIPS**, CEMENTING ESSEX’S ROLE IN THE NATIONAL NUCLEAR TALENT PIPELINE.



### ➤ Distributed solar and heat pump networks

With more than 3.5 million homes across the South-East needing solar, heat pumps and retrofit systems, Essex is emerging as a natural base for installers, platform companies and training providers. Basildon offers a major operations hub for south-central deployment, while Colchester anchors the skills and workforce pipeline through colleges and the University of Essex. This is a fast-scaling market where Essex can lead the region in delivery capacity, skills mobilisation and network-building.

### ➤ Grid-adjacent storage and demand management

As the Norwich to Tilbury transmission circuit progresses toward operation in 2028–2030, Essex becomes a prime location for battery storage, EV fleet charging infrastructure and advanced grid-management technologies. Areas around the East Anglia Connection Node (EACN) substation in North Essex will sit at the heart of a high-value grid flexibility zone, where storage, software and electrified logistics can unlock new capacity and support the national transition. In addition, National Grid is also upgrading the electricity transmission network in East Anglia through the construction of a new overhead line and underground cable. The Bramford to Twinstead upgrade will support renewable and low carbon energy connections and future-proof the grid network. Essex’s grid position makes it one of the UK’s key locations for future energy balancing and flexibility.

### ➤ Green hydrogen production

Bacton is emerging as one of the UK’s major future hydrogen hubs, with the potential to produce green hydrogen using Essex’s growing renewable base and export it to European markets. Harwich provides an alternative export point and a strong platform for offshore-linked hydrogen logistics. As the UK moves from pilot-scale to commercial-scale hydrogen production, Essex stands out as one of the few locations capable of combining offshore energy, port access, and infrastructure readiness.

### ➤ Floating offshore wind supply chain

The next phase of offshore wind off the Essex coast, driven by projects like Bathside Bay, North Falls and post-Five Estuaries developments, will include deep-water floating projects requiring entirely new manufacturing and assembly capabilities. Essex, with Harwich’s deep-water quays and Freeport incentives, is ideally placed to lead in floating platform assembly, mooring and anchoring systems, and dynamic cable technologies. This positions the county at the forefront of a global shift in offshore wind design and deployment.



## CASE STUDIES

### ➤ Utility-scale solar PV in Essex

Longfield Solar Farm and Gülermak

**Essex has firmly established itself as a national leader in utility-scale solar deployment, demonstrated through a series of major projects that prove the county’s ability to deliver large-scale energy generation.**

➤ Longfield Solar, at 500 MW, stands as one of the largest consented solar schemes in the UK, showcasing Essex’s planning maturity and its attractiveness for nationally significant renewable energy projects.

Alongside this, Gülermak Solar’s 42 MW site brings further generation capacity into the system. Together, they show Essex delivering real projects on the ground, building grid-connected capacity, and positioning itself as a core contributor to the UK’s solar and hybrid solar-plus-storage future.

### ➤ Next-generation sustainable energy

Small Modular Reactors (SMRs) and sustainable aviation fuel

**Essex is gaining early-stage leadership in frontier energy technologies, reinforcing its long-term strategic value.**

At London Gateway, the announcement of a 20 MW SMR in 2025 positions Essex at the forefront of advanced nuclear innovation, with the potential to support future industrial electrification. In Harwich and Tendring, Firefly’s Sustainable Aviation Fuel (SAF) project converts wastewater into aviation-grade fuel, placing Essex at the cutting-edge of future low-carbon fuels.

➤ These projects signal that the county is not only delivering today’s energy solutions but is actively shaping the next generation of energy systems.



➤ **Chinook hydrogen and future technologies**

A waste-to-hydrogen facility turning Essex into a leader in circular, low-carbon fuels

Chinook Hydrogen’s proposed 2028 facility will convert residual waste into clean hydrogen for ports, logistics fleets and industrial users across the Thames Estuary and Thurrock corridor. It strengthens Essex’s early-mover position in hydrogen, aligning with RWE and Mitsui’s hydrogen activity at Tilbury and the concept-stage East London Pipeline to form a credible regional hydrogen ecosystem.

➤ **Harwich sustainable energy innovation cluster**

A growing innovation hub anchoring clean-tech entrepreneurship and research in coastal Essex.

Launched in partnership with the University of Essex, Tendring District Council and Freeport East, the Harwich Innovation Hub is already attracting engineering consultancies, supply-chain firms and cleantech start-ups. With the permanent hub targeting opening by 2027/2028, it demonstrates Essex’s ability not only to host major projects, but to cultivate the next generation of energy technology and talent.

➤ **Five Estuaries Offshore Wind Farm**

A 1,080 MW nationally significant offshore wind project proving Essex can deliver at global scale.

Developed by RWE, Macquarie, ESB and Sumitomo, Five Estuaries has secured development consent and moves into construction in mid-2026.



IT WILL POWER UP TO ONE MILLION HOMES AND CREATE MORE THAN 1,300 CONSTRUCTION AND SUPPLY-CHAIN JOBS.

The project validates three things: the planning pathway works, global investor confidence is strong, and Essex’s offshore wind supply chain is ready and mobilising.



# SUPPORT FROM DAY ONE

Essex gives business immediate access to a connected ecosystem of talent, partners and support - making it easier to establish, scale and innovate from day one.

➤ **Extraordinary Essex**

The team offers soft-landing services, guidance and ongoing support to international and UK-based businesses, as well as investors.

➤ **Universities and skills**

The University of Essex, Anglia Ruskin University, Harlow Advanced Manufacturing and Engineering Centre, Colchester Institute’s Clean Energy Technical Excellence College and Chelmsford College provide industry-aligned skills, apprenticeships and R&D support - giving incoming businesses an instant talent and innovation pipeline.

➤ **Essex Chambers of Commerce and Industry**

The chamber promotes, supports, and advocates for local business interests, offering everything from networking events to international trade support.

➤ **Government and regulation**

Freeport East, Thames Freeport, National Grid and Essex County Council offer clear routes through planning, incentives and grid connections, reducing uncertainty and speeding up project delivery, aligning to NSIPs across the county.

➤ **Industry networks**

Established clusters such as Hydrogen East and the Freeport East Cluster Programme provide supply-chain links, collaboration opportunities and hands-on business support, helping firms integrate quickly and grow with confidence.



# ESSEX: OPEN FOR INVESTMENT. READY FOR THE EXTRAORDINARY.

Essex sits on England’s east coast where the Thames Estuary meets the North Sea — a position that has shaped its identity as one of the country’s most important gateways to global trade.

The county is a diverse mix of places: Chelmsford as the administrative and commercial centre; Colchester with its university and historic importance; Basildon and Harlow with strong industrial and technology strengths; and Southend-on-Sea as a dynamic coastal city. Together, they create one of the largest and best-connected regions in the East of England.

Greater Essex has 1.93 million residents, including 1.17 million of working age. Its economy supports 878,000 jobs, over 94,000 businesses, and generates £54.8 billion in annual GVA, roughly 27% of the East of England’s total economy.



**1.93 MILLION RESIDENTS**



**878,000 JOBS  
94,000 BUSINESSES**



**GENERATES £54.8BN  
IN ANNUAL GVA**

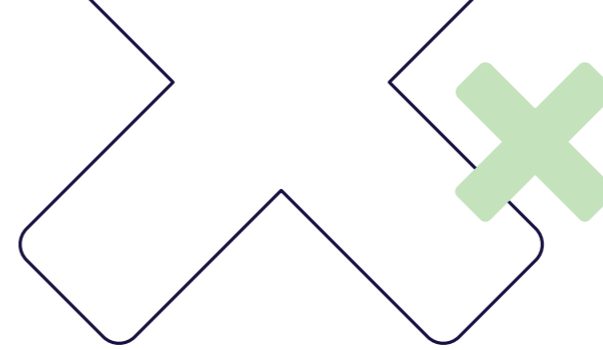
**Essex is entering a major period of long-term investment, with new infrastructure, housing and economic projects shaping its future.**

Road and rail upgrades, including improvements to the A12, A13, A127 and M11, are strengthening connectivity. Stansted Airport’s expansion will grow passenger capacity and aviation jobs, while Thames Freeport is creating new opportunities in energy, logistics and modern manufacturing. New garden communities and mixed-use developments are being planned with employment land, digital infrastructure and community facilities from the outset.

Coastal areas are preparing for significant offshore wind and low-carbon energy growth, including new port-based energy projects around Harwich and the Tendring coast. Towns such as Harlow, Colchester, Chelmsford, Basildon and Braintree are undergoing major regeneration focused on skills, technology, mobility and town-centre renewal. Key projects include the £250 million Bathside Bay sustainable energy hub, expected to create up to 3,500 jobs, and new employment sites in Tendring and Colchester to support industrial and clean-growth sectors.

Greater Essex is planning for strong economic and job growth, with up to 50,000 new roles expected by 2030. Expanded gigabit broadband coverage, already at 88.47% and growing, is enabling technology-driven business models and AI-focused innovation. These developments strengthen Essex’s long-term growth as it modernises infrastructure, expands housing and supports the next generation of industries.

**ESSEX IS OPEN FOR INVESTMENT  
— AND READY FOR THE  
EXTRAORDINARY.**



## A PLACE TO THRIVE & GROW

Essex offers a standout quality of life by blending coastal freedom, countryside calm and city convenience - all within easy reach of London and at far better value. With more than 350 miles of coastline, residents enjoy big skies, clean beaches, tidal islands and nature-rich estuaries that create effortless weekend escapes. Award-winning beaches along the Essex Sunshine Coast and Southend ensure safe, clean and well-kept shoreline experiences year-round.

Inland, the county opens into rolling landscapes like the Dedham Vale National Landscape, or Constable Country, where riverside walks, cycling routes and characterful villages set the tone for slow, scenic living. Essex takes green space seriously, with a long list of Green Flag parks, from Cudmore Grove and Thorndon to Chelmsford’s remarkable collection of 17 award-winning parks and the iconic Epping Forest.



Life here is family-friendly and full of easy days out, whether visiting Colchester Zoo, exploring Norman and Roman history at Colchester Castle, wandering RHS Hyde Hall or enjoying classic seaside fun at Adventure Island. And the food culture is quietly exceptional, from Mersea’s famed native oysters and the iconic Maldon Salt, to the emerging Crouch Valley wine region, now known for some of England’s most exciting still wines.

What Essex ultimately offers is room to breathe - more coast, more green space, more flavour and more home for your money. It’s a place where the lifestyle begins the moment you arrive, shaped by light, landscape and a sense of ease that’s uniquely its own.





## EXTRAORDINARY ESSEX

Contact us:

[extraordinaryessex@essex.gov.uk](mailto:extraordinaryessex@essex.gov.uk)

Essex County Council  
County Hall, Chelmsford, Essex CM1 1QH  
[www.essex.gov.uk](http://www.essex.gov.uk)

The information contained in this document  
can be translated and/or made available in  
alternative formats, on request.

Published May 2026



**READY FOR THE  
EXTRAORDINARY?**

[www.extraordinaryessex.co.uk](http://www.extraordinaryessex.co.uk)



Essex County Council

