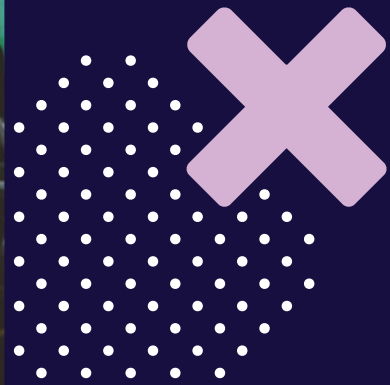


EXTRAORDINARY  
**ESSEX**



# ADVANCED MANUFACTURING

➤ VALUE PROPOSITION

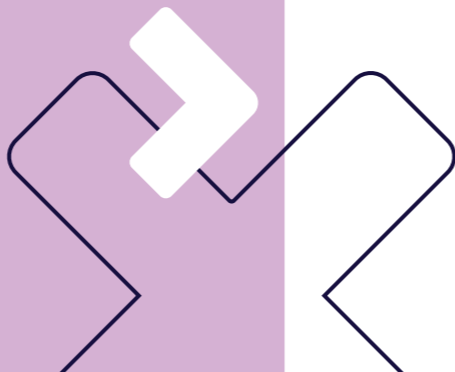


# CONTENTS

- Essex manufacturing: Proven strength and ready to scale 3
- Essex’s advanced manufacturing sector at a glance 6
- Home to the remarkable 8
- Essex’s thriving manufacturing base 10
- Opportunities await 14
- Case studies 16
- Support from day one 20
- Life in Essex 22



## ESSEX: OPEN FOR INVESTMENT. READY FOR THE EXTRAORDINARY.



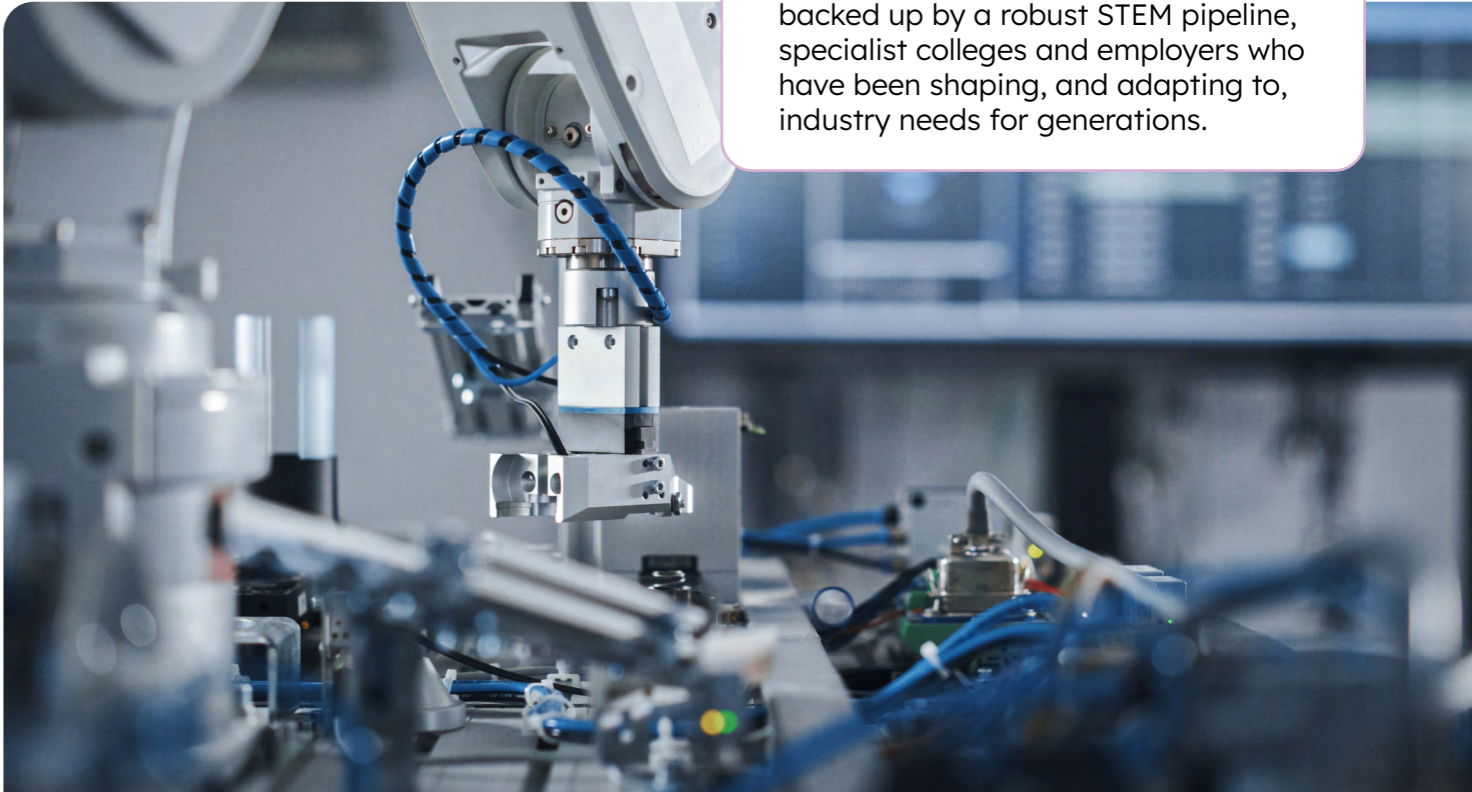
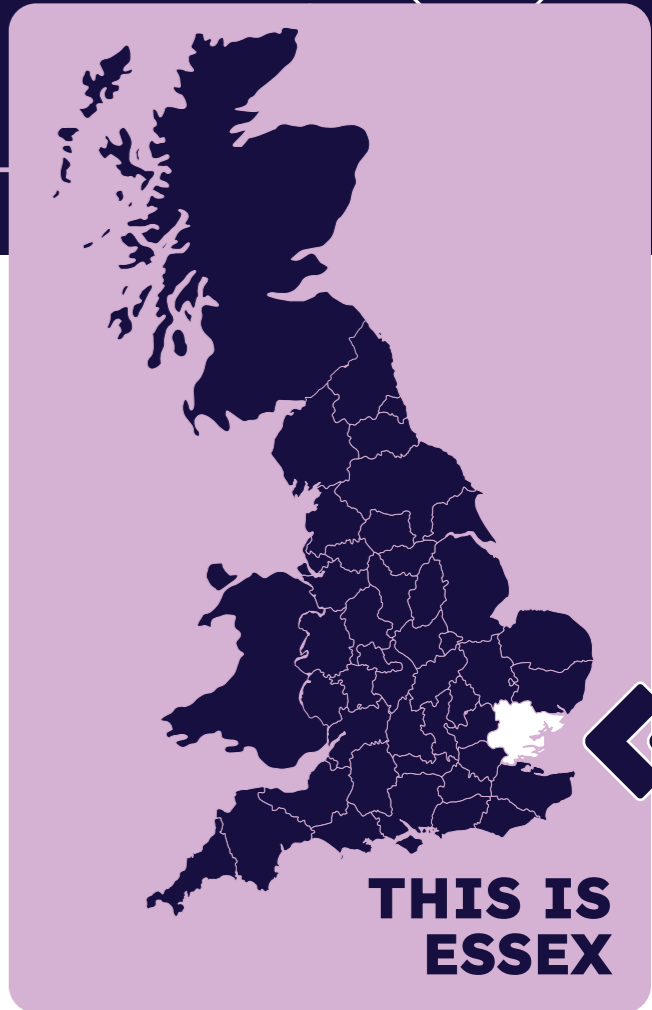
# ESSEX MANUFACTURING:

## PROVEN STRENGTH AND READY TO SCALE



Essex has been a pillar of British manufacturing for more than a century, with a reputation built on precision engineering, aerospace components, high-reliability electronics, advanced materials and, today, next-generation digital production.

This history of strength and innovation is very much alive today in a modern ecosystem of global Original Equipment Manufacturers (OEMs), specialist suppliers and highly skilled technicians who continue to support national and international supply chains. The county combines deep industrial know-how with strong connectivity to London, major ports and airports, giving manufacturers the space, skills and access needed to scale modern production.



Engineering excellence runs deep, backed up by a robust STEM pipeline, specialist colleges and employers who have been shaping, and adapting to, industry needs for generations.

The county's industrial story stretches back to the early 1900s, when Marconi made Chelmsford the birthplace of radio and set a foundation for technical innovation. Post-war growth in new towns such as Basildon, Harlow and Southend brought toolmakers, machinists and electronics firms, creating a culture of accuracy, reliability and skill that still defines Essex. This foundation was transformed in the 1960s as major international OEMs selected Essex for long-term investment, most notably Ford's Dunton Technical Centre and Basildon operations, which created a legacy of vehicle engineering excellence that continues to support electrification and propulsion innovation across Europe.

Ford and CNH Industrial's New Holland Agriculture anchor long-running automotive and agri-machinery production. Electronics and semiconductor specialists Teledyne e2v and CML Micro supply sensors, RF systems and components for global space and communications programmes. The county's engineering heritage continues with Leonardo in Basildon, BAE Systems' AI Labs in Great Baddow, and Raytheon UK at Harlow's Kao Park, providing mission-critical radar, electro-optics and secure systems. Essex also has a major aerospace and Maintenance, Repair, and Operations (MRO) cluster around London Southend and London Stansted airports. Companies such as Ipeco, the Inflight Group, GKM Aerospace, and Coldon

Engineering produce complex components for global airframe and defence platforms. These strengths are supported by med-tech manufacturer Olympus KeyMed and next-generation automated production at British Offsite's Braintree facility.

What sets Essex apart is the continuity behind its industrial base: long-standing supplier networks, multi-generation engineering talent and firms, both family-run and global, committed to precision and long-term customer relationships. The county offers quality and reliability that investors can depend on.

➤ TODAY, ESSEX HAS AN **OUTSTANDING CONCENTRATION** OF WORLD-CLASS ADVANCED MANUFACTURING COMPANIES.



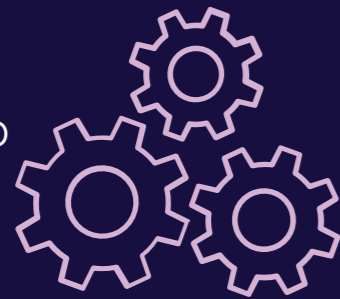
Image © Crittall Windows

Essex brings together heritage, modern capability and global industry. The county is one of the UK's most dependable, production-ready environments for advanced manufacturing.

ESSEX IS OPEN FOR **INVESTMENT**, BUILT ON **EXPERIENCE**, AND READY FOR THE **EXTRAORDINARY**.

# ESSEX'S ADVANCED MANUFACTURING SECTOR AT A GLANCE

**3,465**  
MANUFACTURING ENTERPRISES AND  
**3,605**  
LOCAL UNITS



Essex accounts for **one-quarter** of the East of England's manufacturing base and **~3% of the UK total**.

**£4.57 BILLION GVA**



**FROM MANUFACTURING**  
(8.3% OF LOCAL ECONOMY)

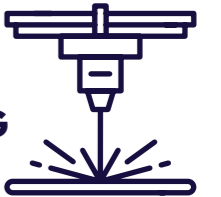
**✘ Manufacturing is a major pillar of Essex's economic output.**

**363,000**  
RESIDENTS QUALIFIED TO  
**RQF LEVEL 4+**



A deep reservoir of **technical and professional skills** supporting energy, advanced manufacturing and innovation industries.

**38,000**  
MANUFACTURING WORKERS



(INCLUDING 22,000 IN ADVANCED MANUFACTURING)

A **deep, sector-specific** labour pool supporting scaling employers.

**22,000**  
ADVANCED MANUFACTURING JOBS (24,695 IN GREATER ESSEX)

A significant workforce underpinning one of the region's **strongest industrial sectors**.

**1,315**  
ADVANCED MANUFACTURING ENTERPRISES (1,505 IN GREATER ESSEX)

Essex hosts around a **quarter of all advanced manufacturing businesses** in the East of England.

**88%**



**GIGABIT BROADBAND COVERAGE** AND 94,000+ BUSINESSES

A highly **digital, well-connected environment** for modern manufacturing.

COMPETITIVE WAGES:  
**£18K-£28K ENTRY;**  
**£32K-£55K MID-LEVEL;**  
ALONGSIDE EXCELLENT SPECIALIST SALARIES\*

Employers avoid London's 25-40% wage premium while **maintaining talent quality**.

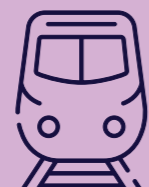
\* Average figures based on 2026 local job salaries

**UNRIVALLED CONNECTIVITY**



**➤ TWO INTERNATIONAL AIRPORTS** (STANSTED AND SOUTHEND)

Provide **fast, easier access** to European and global markets.



**➤ TWO MAJOR PORTS** (HARWICH, TILBURY) WITH FREEPORT BENEFITS



**➤ STRATEGIC ROAD/RAIL LINKS** (A12, A13, A120, M11, FAST LONDON RAIL)

Ensures **seamless access** to national supply chains and customers.

**INDUSTRIAL SPACE AT**

**£8 TO £18 PER SQ FT**

(VS £20 IN LONDON)\*

\* Average figures based on 2026 local commercial rents

**250 TO 350 ENGINEERING/ TECHNICAL GRADUATES** ANNUALLY AND **300 TO 400 APPRENTICES** PER YEAR

A **steady STEM talent supply** from Anglia Ruskin University (ARU) and the University of Essex and entry-level recruitment capacity across key technical fields.



# HOME TO THE REMARKABLE

Essex's location hasn't shaped its manufacturing success by chance; it has been the driving force behind it.

## 1 Built on resource

Essex sits at the centre of a wider innovation corridor stretching from London into Hertfordshire and Cambridgeshire, giving manufacturers direct access to leading research expertise, testing capabilities and specialist suppliers across high-value sectors. This regional connectivity gives a direct route into emerging technologies such as automation, robotics, advanced materials and diagnostics, while Essex's long-established supply chains provide stability and reliability. Together, this blend of tradition and innovation creates an environment which supports firms to upgrade, diversify or scale with confidence.

Essex hosts a diverse and established advanced manufacturing ecosystem. Precision engineers, aerospace suppliers, MedTech manufacturers and specialist SMEs deliver machining, prototyping, component production, testing and bespoke engineering

services, reducing reliance on distant suppliers. This depth and diversity strengthens resilience, giving manufacturers multiple high-quality local options for fabrication, electronics, assembly and testing.

The workforce pipeline underpins this ecosystem. Dedicated training centres such as the Harlow Advanced Manufacturing and Engineering Centre (HAMEC), technical programmes at Harlow College, partnerships with local universities and a well-established apprenticeship system all contribute to a steady flow of skilled technicians and engineers. Training increasingly covers modern capabilities and emerging technologies such as robotics and automation.

➤ **ESSEX'S STRENGTHS CREATE A SCALABLE INDUSTRIAL BASE ABLE TO SUPPORT GROWTH, INNOVATION AND MORE ADVANCED PRODUCTION.**



## 2 Infrastructure

Essex provides manufacturers with high-quality physical and digital infrastructure that supports efficient, modern operations. The county combines benefits from extensive full-fibre coverage, 5G-ready districts which allow firms to deploy Industry 4.0 technologies such as real-time monitoring, predictive maintenance and automated data capture from day one.

Logistics infrastructure is equally as strong. London Gateway, Harwich International and Felixstowe provide direct access to key European markets. Stansted and Southend airports add further international reach for moving people, components and high-value goods. Major roads - including the M11, A12, A13/A127 and A120 - and rail lines connect Essex's manufacturing centres with London, Cambridge, and the ports, enabling smooth movement of materials, finished products and specialist teams.

Together, these assets form an interconnected transport system that enables dependable production cycles and friction-free logistics.

➤ **FOR INVESTORS, ESSEX IS AN EASY PLACE TO OPERATE, SCALE AND REACH CUSTOMERS WITH CONFIDENCE.**



## 3 Market upside

Essex offers manufacturers an exceptional market position. Bordering London, it offers immediate access to the UK's largest and most diverse customer base. Within 50 miles, companies can reach a 12 million strong customer base which includes major NHS supply chains, retail headquarters, professional services clusters and nationwide automotive networks. Same-day and next-day deliveries into the capital are routine, making Essex an ideal base for companies that rely on fast turnaround and direct customer reach.

The county builds on its strong heritage of engineering and manufacturing and is now combining that legacy with digital capability to support the next generation of high-growth industries. Its location allows firms to serve high-value sectors such as automotive, aerospace, healthcare, logistics and construction, without relocating production.

Strong links around the M25 provide quick access to national markets including the Midlands, Bristol, Manchester and Cambridge, while ports such as London Gateway, Harwich International and Felixstowe provide direct continental routes.

➤ **ESSEX GIVES FIRMS THE RARE ABILITY TO SERVE LONDON AND EUROPEAN CUSTOMERS FROM A SINGLE, WELL-CONNECTED BASE.**

# ESSEX'S THRIVING MANUFACTURING BASE

Essex's manufacturing ecosystem is built around a set of complementary clusters, each contributing its own strengths.

Together, they link the county's world class ports, manufacturing bases, university driven innovation activity, and growing energy and grid infrastructure into one connected system. This integrated platform gives Essex the scale, capability and momentum needed to support the shift to cleaner, more advanced forms of production and provides an environment where businesses can innovate, grow and move at a pace few regions can match.



## Basildon: World leading supply and scale

▶ Basildon is Essex's principal advanced manufacturing hub, built on decades of engineering, precision tooling and medical technology. This heritage has created a reliable industrial ecosystem where firms can deliver with confidence.

Its location gives firms a major strategic advantage. Direct M25 access via the A127 puts London just 32 miles away, while London Gateway Port is only 25 miles, enabling rapid routes to South Coast, London and national customer bases.

On the ground, Basildon also offers a wide range of ready-to-use industrial spaces and a dense local supplier base that reduces lead times and operational risk. Established estates such as Radford, Basildon Business Park and Pipp's Hill provide modern units from 5,000 to 50,000 sq ft.

Over 1,800 manufacturing firms support a manufacturing base which is broad and mature, spanning precision engineering, automotive components, medical technology and digitally enabled production, creating a complete, resilient local supply chain.

▶ For investors, Basildon stands out as an established, low-risk, high-capacity location with strong connectivity, deep supply-chain strength and a long track record of delivering at scale.

## Braintree: Digital transformation and leading sustainability

▶ Braintree is Essex's second major advanced manufacturing centre and is well-positioned for the next wave of growth. Its offer is modern and future-focused, built around innovation, digital capability and low-carbon development.

At the centre of this is Horizon 120, a high-spec, energy-efficient business park designed for advanced manufacturing, backed by best-in-class digital connectivity. The Plaza Centre for Enterprise and Innovation adds shared facilities for training, collaboration and business support. With capacity for 2,000 plus jobs and a target of 160 new roles each year from The Plaza alone, the tenant mix already signals the direction of travel - CareCo in care products, British Offsite in modular construction, Medequip in medical devices, alongside a growing cohort of precision engineering firms.

Braintree also offers strong cost and connectivity advantages. Industrial space is affordable, and the A120 links quickly to the A12 and wider strategic road network such as the M25. Rail connections and proximity to Stansted Airport broaden both national and international reach. Braintree's investment strategy is aligned to sustainability goals, circular-economy principles and high-bandwidth digital systems to reduce unnecessary travel and improve efficiency.

▶ Braintree is the modern choice for firms prioritising digital transformation, sustainability and forward-looking operations and a place where ambitious manufacturers move to gain a technological edge.

## Harlow: A growing manufacturing hub with a future-ready workforce

▶ Harlow is Essex's emerging advanced manufacturing hub, driven by an innovation ecosystem, world-class training infrastructure and the county's strongest growth trajectory.

It already supports 3,000 to 4,000 advanced manufacturing roles, with a pathway to 5,000 plus. At the centre of this offer is HAMEC, a major investment that gives employers confidence to build and scale. It provides industry-aligned training in machining, digital design, automation, welding and quality systems, and connects learners directly with local manufacturers so firms can hire people who are skilled and job-ready.

This talent engine sits within a wider innovation ecosystem anchored by Harlow Innovation Park, designated the UK's top tech hub in 2024 and a gateway to the UK Innovation Corridor, and supported by major investment in culture, healthcare and future life-sciences activity. Together, these assets create an environment where new technologies can be developed, tested and commercialised quickly.

Harlow's long-term plans show clear ambition, targeting 23,000 new jobs by 2045 and signalling capacity for high-growth in advanced manufacturing.

▶ For companies in sectors such as aerospace, life sciences, advanced materials and battery technology, Harlow offers a distinctive proposition. It has a reliable skills pipeline, an innovation network that accelerates progress and an emerging cluster where early movers gain a competitive advantage as the district grows.



### Thurrock: Port-powered manufacturing, logistics and industrial heartland

▶ **Thurrock is Essex's centre of scale for sea-and-road logistics. It sits at the heart of the Thames logistics system with two global ports: DP World London Gateway and the Port of Tilbury.**

London Gateway surpassed 3 million TEU (Twenty-foot Equivalent Unit) in 2025 after new berth expansions. DP World is investing £1 billion in two further all-electric berths and a second rail terminal, positioning the port to become the UK's largest container port by the end of the decade. For manufacturers, this means more mainline calls, shorter dwell times and reliable import and export windows.

Next door, the Port of Tilbury processes ~16 million tonnes annually and offers over five million sq ft of warehousing spaces, 1,400 reefer points, modern Border Control Posts and the new Tilbury2 Ro-Ro and rail terminals. It is a major hub for the construction, automotive and food sectors, providing rapid European freight links for manufacturers needing temperature control, Ro-Ro capacity or high-volume bulk handling.

Thurrock's industrial land is configured for speed. The A13 corridor (J30/31 of the M25), West Thurrock and Purfleet, and the Lakeside and Weston Avenue estates form a dense network of logistics-ready sites where 10,000 to 110,000 sq ft units come to market regularly, such as Waterglade Industrial Park and Proxima111. "Plug-and-play" units typically offer large yards, multiple loading doors and high eaves which makes them ideal for assembly, packaging and late-stage configuration close to the ports.

In addition, Thames Freeport offers customs simplifications, duty deferral, tariff inversion, VAT suspension and tax-site incentives such as enhanced capital allowances and business rates relief. This creates a simple platform for import-heavy, export-active and supply-chain-sensitive manufacturers operating across London Gateway, Tilbury and their associated tax and customs sites.

▶ Thurrock stands out as a high-capacity, port-centric location offering unrivalled global connectivity, logistics-ready land and powerful Freeport advantages.

### Chelmsford – Colchester: Essex's connected innovation and advanced manufacturing corridor

▶ **Chelmsford and Colchester form one of Essex's most balanced manufacturing corridors, combining high-tech engineering, strong R&D capability, modern industrial space and deep skills pipelines in a well-connected geography.**

Chelmsford is the engineering and high-value manufacturing anchor. The city's firms specialise in sensors, imaging, medical technologies, RF electronics and precision environments that require controlled processes and specialist technicians. It offers a wide range of high-quality industrial space, from modern assembly-ready units at Waterhouse Business Park and Widford, to larger production and logistics units at Springfield and Dukes Park near the A12 Boreham Interchange. The reliability of this stock allows companies to move in with minimal fit-out and begin production quickly.

Colchester provides the innovation engine. The University of Essex's Knowledge Gateway gives manufacturers direct access to AI, data science, robotics, analytics and cyber skills, making it one of the strongest R&D propositions in the East of England. Its manufacturing base is focused on electronics, digital fabrication, precision systems, defence-adjacent technologies and creative tech. Industrial supply is robust, with large clusters at Severalls Industrial Estate and Colchester Business Park offering fast occupancy, strong power capacity and immediate access to the A12/A120. Northern Gateway will add 484,000 sq ft of new space with ultrafast broadband and a low-carbon heat network for lower-emission operations.

Skills provision is strong across both cities. Anglia Ruskin University delivers biomedical, life science, engineering, computing and MedTech talent, supported by its Arise Innovation Hubs. Colchester's University of Essex provides leading AI, analytics, robotics, cyber and data science capability. Together, they provide a pipeline of engineers, technicians, data specialists and research-led graduates who underpin advanced production, regulated manufacturing and innovation-rich sectors.

Connectivity ties the corridor together. The A12 links both cities to London, the M25 and Ipswich, while the A120 connects Colchester directly to Harwich and Felixstowe for export-oriented firms. Fast rail links with London supports customer access, collaboration and workforce mobility.

▶ For manufacturers relying on responsive supply chains and R&D partnerships, the Chelmsford - Colchester corridor offers both reliability and efficiency.



# OPPORTUNITIES AWAIT

## Specialisms and future growth sectors

Essex's strengths are rooted in a long-established advanced manufacturing base where demand, supply-chain maturity and customer proximity converge.

Basildon's 60-year automotive and precision engineering heritage supports low-risk expansion into EV battery pack components, electric drive trains and lightweight materials processing. Manufacturers benefit from proximity to London dealerships and direct ties into European OEM supply chains. MedTech production is equally strong, with Basildon's established base and Harlow's emerging life sciences cluster enabling diagnostics, wearables and NHS-oriented production that few regions can match.

Looking ahead, Essex is positioned for growth in battery systems, energy storage and aerospace components, supported by European materials routes and the South Essex to Cambridgeshire corridor. Longer term, Harlow offers a natural focal point for life sciences and biotech manufacturing, strengthened by the £800 million Princess Alexandra Hospital redevelopment, the UKHSA relocation opportunity and industry aligned training at HAMEC.

With the UK's Small Modular Reactor (SMR) programme gaining momentum, Essex's manufacturing base offers a prime opportunity for specialised fabrication, modular assembly and advanced component production.



## Scaling your business globally

Essex offers a compelling platform for advanced manufacturers seeking to scale with confidence, combining strategic connectivity, diverse industrial space and unrivalled access to global markets. Whether expanding production, optimising supply chains or accelerating export growth, Essex delivers the infrastructure, location advantages and market access needed to support global ambitions.

Chelmsford sits at the centre of Essex's economic and transport network, offering strong links to the rest of Essex, London and the wider South East. The city has a broad mix of industrial space across making it well suited to manufacturers, distributors and high-value service firms and giving manufacturers and distributors a choice of modern units, warehousing and logistics facilities. The city also benefits from fast rail services to London Liverpool Street, including via the new Beaulieu Park Station, plus strong road links. Stansted and Southend airports are also close by. Together, these advantages make Chelmsford a practical, well-connected base for firms needing reliable distribution networks and high-quality space.

South Essex — including Southend, Basildon and Thurrock — offers a logistics-focused industrial base with direct access to London Gateway Port and Thames Freeport corridor, a nationally important growth area. This proximity enables fast import and export operations, reduced lead times and efficient last-mile delivery into London, supporting both manufacturers and distributors. South Essex provides a strategic location for manufacturers and distributors that rely on dependable freight links, European connectivity and logistics-ready industrial space.

Image ©  
Mulholland Media

With immediate access to ports, strong transport infrastructure, fast routes into London and a wide range of available industrial space, South Essex provides a strategic location for manufacturers and distributors that rely on dependable freight links, European connectivity and logistics-ready industrial space.



## Heritage meets innovation

Essex's advanced manufacturing strengths are built on a distinctive blend of heritage, established industrial capability and forward-looking innovation. Long-standing industrial estates sit alongside modern innovation districts and purpose-built facilities, creating an ecosystem where traditional engineering expertise converges with cutting-edge technologies. This combination gives manufacturers access to mature, cost-effective space as well as new, high-spec environments designed to support growth, experimentation and next-generation production.

Basildon offers a strong base of ready-to-use industrial space across several established estates. Across Basildon's estates units



come in a variety of sizes, often refurbished and secure, offering affordable options for logistics-focused and engineering-led operations. Combined with strong connectivity and a deep industrial base, Basildon provides dependable and cost-effective space within the South East.

Braintree offers modern industrial space suited to innovation and firms seeking high-quality, energy-efficient facilities. Horizon 120 is the flagship site, providing new units designed for growth and innovation. The district also includes a mix of new developments and established estates, giving businesses a choice of modern premises or mature locations with existing infrastructure. Strong connections via the A120 link Braintree quickly to the A12 and wider regional routes.

Harlow is an emerging hub for advanced manufacturing, anchored by Harlow Innovation Park and a growing life sciences and technology ecosystem. The park provides modern, flexible industrial and commercial space with direct access to the M11/M25 corridor, and close proximity to HAMEC — a major source of aerospace and engineering skills. The area is attracting firms in aerospace, MedTech and precision engineering thanks to competitive costs, improving infrastructure and a strong skills pipeline. Surrounding estates add further capacity, creating a compelling base for firms needing innovation, talent and connectivity.



## CASE STUDIES

### Anchor automotive manufacturing

Ford, Basildon

**A long-standing automotive engineering hub underpinning Essex's advanced manufacturing strength.**

Ford has operated in Basildon for decades, serving as a major centre for engine and vehicle design and anchoring a wider network of specialist suppliers, engineers and advanced manufacturers. Its sustained presence demonstrates Essex's proven ability to support complex, high-value industrial operations, while continuing to drive innovation throughout the automotive supply chain. Ford continues to provide significant skilled employment and technical capability, reinforcing Basildon's role as a strategic hub for automotive engineering and manufacturing.

### Advanced electronics and space technologies

Teledyne e2v, Chelmsford

**A world-leading centre for high-precision electronics powering global aerospace and space missions.**

Teledyne e2v's Chelmsford facility is a major hub for advanced electronics, producing mission-critical technologies used in aerospace, defence and international satellite programmes. Its work highlights Essex's role in high value, R&D intensive manufacturing, where products must meet exceptional standards of precision and reliability.

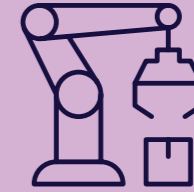
Chelmsford gives the company access to specialist engineers, purpose-built facilities and strong research networks, reinforcing the area's position as a leading hub for space and advanced electronics innovation.

### Defence and aerospace manufacturing with R&D integration

Leonardo, Basildon

**A major defence and aerospace hub combining advanced manufacturing with cutting-edge research and innovation.**

Leonardo is a significant defence and aerospace employer in Basildon. It combines high-precision manufacturing with advanced research and development to support some of the UK's most complex and technology-driven programmes. Its long-term investment demonstrates strong confidence in Essex as a centre for high-value, secure and innovation-led industries. The Basildon site brings together production, engineering and R&D capability, enabling Leonardo to deliver systems that demand exceptional precision, technical expertise and stringent security standards.

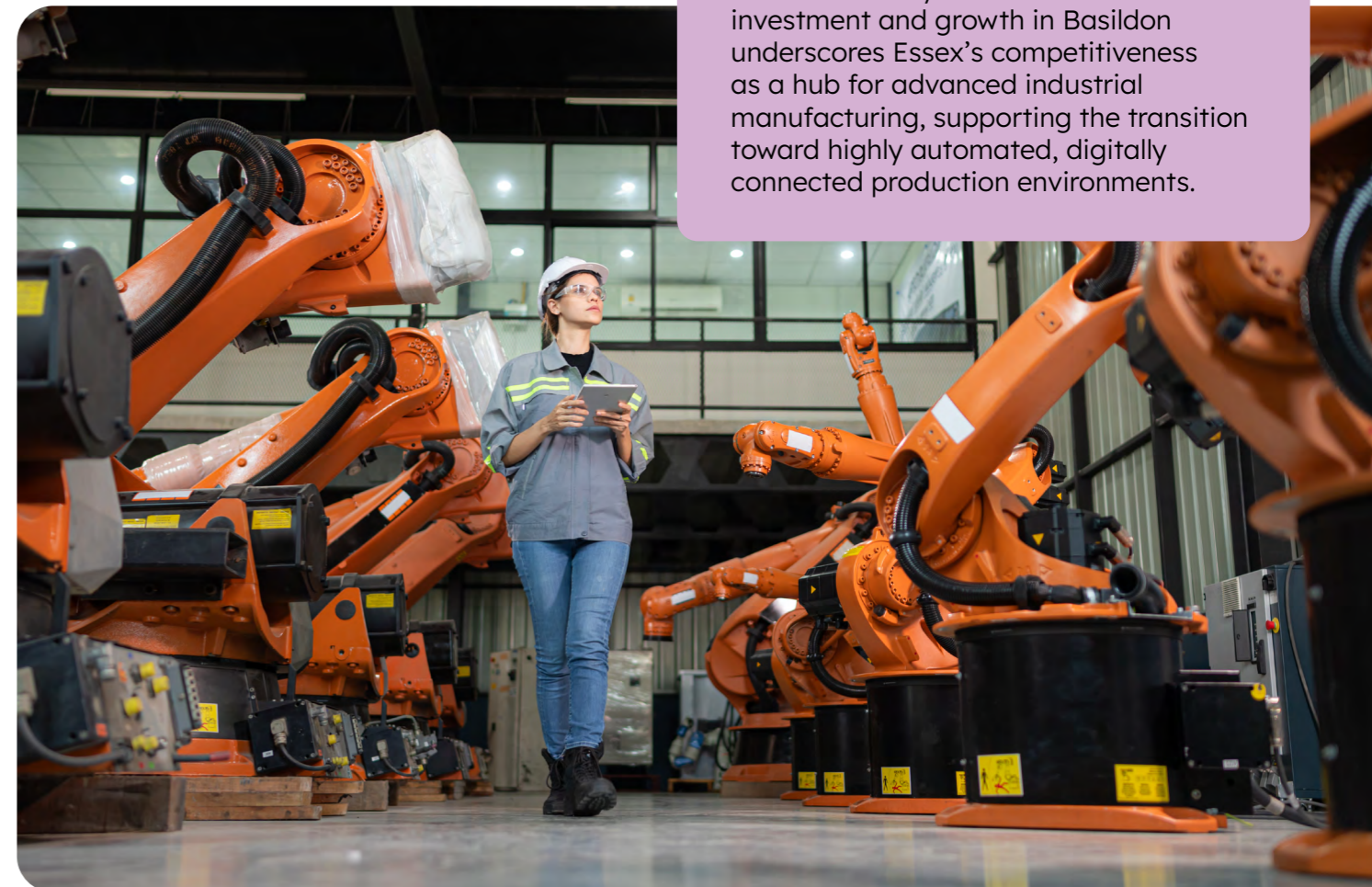


### Robotics-enabled heavy machinery manufacturing

CNH Industrial, Basildon

**A global machinery producer advancing robotics-driven, smart manufacturing in Essex.**

CNH Industrial is a major global manufacturer of tractors and heavy machinery. Its operations in Basildon integrate robotics, automation and smart systems into modern production processes. The site reflects the accelerating shift toward technology-enabled industrial engineering, where advanced digital controls and precision systems drive improvements in productivity, quality and consistency. CNH's continued investment and growth in Basildon underscores Essex's competitiveness as a hub for advanced industrial manufacturing, supporting the transition toward highly automated, digitally connected production environments.



➤ **Global leader in aerospace engineering**

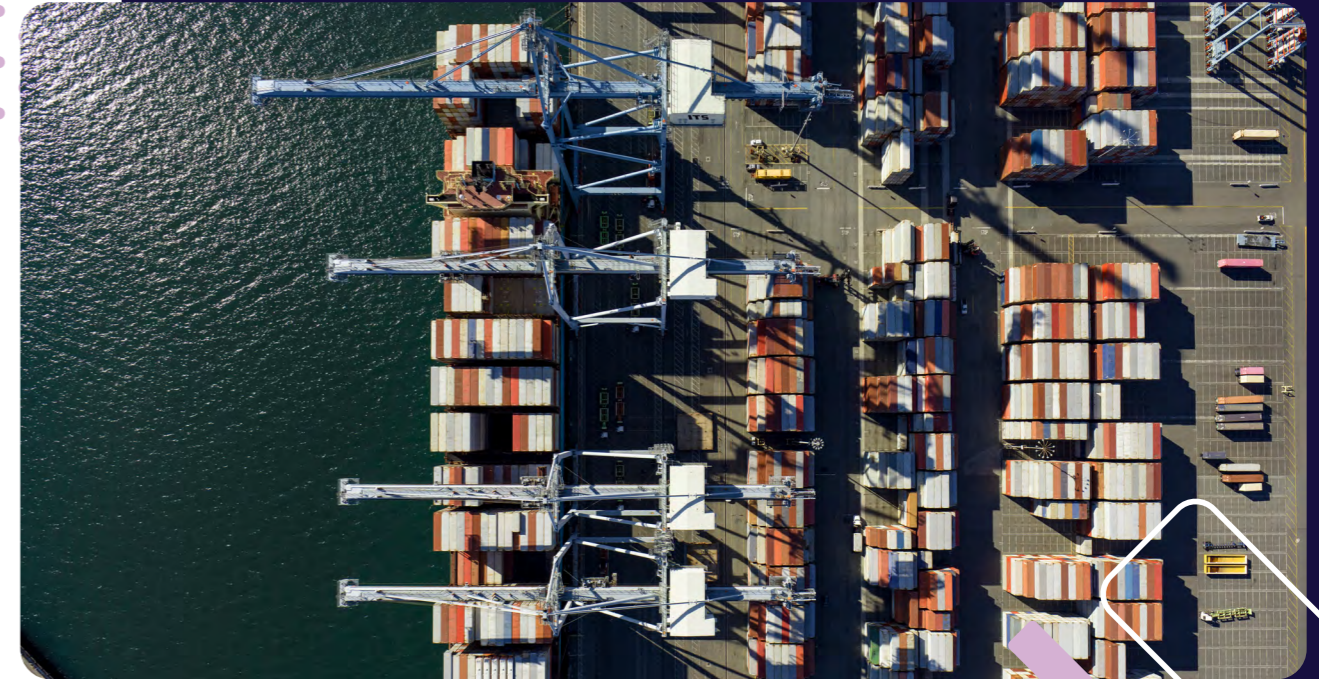
Ipeco, Rochford

An internationally recognised firm designing and manufacturing aircraft seating.

Ipeco exemplifies Greater Essex's strength in advanced manufacturing, having grown from a small Southend-on-Sea workshop into a globally recognised aerospace engineering leader. The company has built a world-class reputation for designing and manufacturing aircraft crew and executive jet passenger seating, as well as advanced galley inserts, motion control systems, and precision-engineered components.



The company has been recognised by the prestigious King's Awards for Enterprise, and its success reinforces Greater Essex's position as a high-value manufacturing hub with deep expertise in precision engineering and advanced aviation technologies.



➤ **World-class precision engineering**

Currock, Chelmsford

Currock Engineering is a long-established, world-class precision engineering company based in Chelmsford, Essex, bringing more than six decades of expertise to the region's advanced manufacturing landscape.

The firm specialises in high tolerance components for aerospace, defence, energy, and marine sectors, supported by AS9100 accreditation and trusted by leading primes such as MBDA, Leonardo, and BAE Systems. With around 100 highly skilled staff and a reputation for delivering exceptional performance against demanding specifications, Currock exemplifies the innovation, quality culture, and global competitiveness that define Essex's manufacturing sector - making the county a compelling destination for investment in high value engineering.



# SUPPORT FROM DAY ONE

Essex gives business immediate access to a connected ecosystem of talent, partners and support - making it easier to establish, scale and innovate from day one.

## ➤ Extraordinary Essex

The team offers soft-landing services, guidance and ongoing support to international and UK-based businesses, as well as investors.

## ➤ Universities and skills

The University of Essex, Anglia Ruskin University, Harlow Advanced Manufacturing and Engineering Centre, Colchester Institute and Chelmsford College provide industry-aligned skills, apprenticeships and R&D support - giving incoming businesses an instant talent and innovation pipeline.

## ➤ Essex Chambers of Commerce and Industry

Provides insights, intelligence and sector support for advanced manufacturing as well as an engaged peer community.



## ➤ Essex Supply Chain Portal

A shared digital platform connecting businesses of all sizes across Essex. The portal enables companies to discover new opportunities, promote their capabilities, and connect with partners, buyers and anchor organisations. By strengthening visibility, encouraging collaboration and supporting local sourcing, it helps businesses grow, innovate and compete as part of a resilient, integrated Essex supply chain.

**Learn more today:**



## ➤ Essex Manufacturing Alliance

A working group focused on advanced manufacturing and engineering, helping businesses collaborate, upskill their workforce and access the resources needed to grow.

## ➤ Government and regulation

Essex County Council offers clear routes through planning, and incentives, reducing uncertainty and speeding up project delivery.

## ➤ Industry networks

Established clusters provide supply-chain links, collaboration opportunities and hands-on business support, helping firms integrate quickly and grow with confidence.



# ESSEX: OPEN FOR INVESTMENT. READY FOR THE EXTRAORDINARY.

Essex sits on England’s east coast where the Thames Estuary meets the North Sea — a position that has shaped its identity as one of the country’s most important gateways to global trade.

The county is a diverse mix of places: Chelmsford as the administrative and commercial centre; Colchester with its university and historic importance; Basildon and Harlow with strong industrial and technology strengths; and Southend-on-Sea as a dynamic coastal city. Together, they create one of the largest and best-connected regions in the East of England.

Greater Essex has 1.93 million residents, including 1.17 million of working age. Its economy supports 878,000 jobs, over 94,000 businesses, and generates £54.8 billion in annual GVA, roughly 27% of the East of England’s total economy.



**1.93 MILLION RESIDENTS**



**878,000 JOBS  
94,000 BUSINESSES**



**GENERATES £54.8BN  
IN ANNUAL GVA**

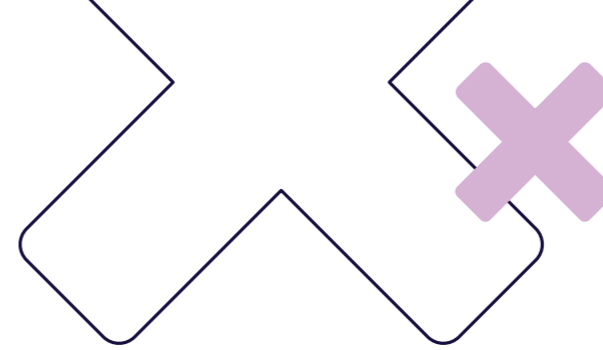
**Essex is entering a major period of long-term investment, with new infrastructure, housing and economic projects shaping its future.**

Road and rail upgrades, including improvements to the A12, A13, A127 and M11, are strengthening connectivity. Stansted Airport’s expansion will grow passenger capacity and aviation jobs, while Thames Freeport is creating new opportunities in energy, logistics and modern manufacturing. New garden communities and mixed-use developments are being planned with employment land, digital infrastructure and community facilities from the outset.

Coastal areas are preparing for significant offshore wind and low-carbon energy growth, including new port-based energy projects around Harwich and the Tendring coast. Towns such as Harlow, Colchester, Chelmsford, Basildon and Braintree are undergoing major regeneration focused on skills, technology, mobility and town-centre renewal. Key projects include the £250 million Bathside Bay sustainable energy hub, expected to create up to 3,500 jobs, and new employment sites in Tendring and Colchester to support industrial and clean-growth sectors.

Greater Essex is planning for strong economic and job growth, with up to 50,000 new roles expected by 2030. Expanded gigabit broadband coverage, already at 88.47% and growing, is enabling technology-driven business models and AI-focused innovation. These developments strengthen Essex’s long-term growth as it modernises infrastructure, expands housing and supports the next generation of industries.

**ESSEX IS OPEN FOR INVESTMENT  
— AND READY FOR THE  
EXTRAORDINARY.**



## A PLACE TO THRIVE & GROW

Essex offers a standout quality of life by blending coastal freedom, countryside calm and city convenience - all within easy reach of London and at far better value. With more than 350 miles of coastline, residents enjoy big skies, clean beaches, tidal islands and nature-rich estuaries that create effortless weekend escapes. Award-winning beaches along the Essex Sunshine Coast and Southend ensure safe, clean and well-kept shoreline experiences year-round.

Inland, the county opens into rolling landscapes like the Dedham Vale National Landscape, or Constable Country, where riverside walks, cycling routes and characterful villages set the tone for slow, scenic living. Essex takes green space seriously, with a long list of Green Flag parks, from Cudmore Grove and Thorndon to Chelmsford’s remarkable collection of 17 award-winning parks and the iconic Epping Forest.



Life here is family-friendly and full of easy days out, whether visiting Colchester Zoo, exploring Norman and Roman history at Colchester Castle, wandering RHS Hyde Hall or enjoying classic seaside fun at Adventure Island. And the food culture is quietly exceptional, from Mersea’s famed native oysters and the iconic Maldon Salt, to the emerging Crouch Valley wine region, now known for some of England’s most exciting still wines.

What Essex ultimately offers is room to breathe - more coast, more green space, more flavour and more home for your money. It’s a place where the lifestyle begins the moment you arrive, shaped by light, landscape and a sense of ease that’s uniquely its own.





## EXTRAORDINARY ESSEX

Contact us:

[extraordinaryessex@essex.gov.uk](mailto:extraordinaryessex@essex.gov.uk)

Essex County Council  
County Hall, Chelmsford, Essex CM1 1QH  
[www.essex.gov.uk](http://www.essex.gov.uk)

The information contained in this document  
can be translated and/or made available in  
alternative formats, on request.

Published May 2026



**READY FOR THE  
EXTRAORDINARY?**

[www.extraordinaryessex.co.uk](http://www.extraordinaryessex.co.uk)



Essex County Council

